

julia

BARDSLEY_POPPY

andrew

Artists in Residence at Chelsea Theatre 2010 -12

Julia Bardsley and Andrew Poppy have been working as individual artists for thirty years and as collaborators for over twenty years, making hybrid works that encompass theatre/performance, opera/music theatre, film/video, live/visual art installation & concerts with visuals.

For the next two years they will be artists in residence at Chelsea Theatre, developing new work, conducting workshops and curating special events.

They are in the process of setting up an organisational umbrella. This formalised cultural association/partnership will act as an on-going structure to support and facilitate their creative thinking, current works, project development, production, promotion, public engagement and dissemination.

They have six show in repertoire: Trans-Acts, Almost the Same. Aftermaths, The Staining Ensemble/...and the Shuffle of Things, Improvements on Nature, Avalanche Thoughts.



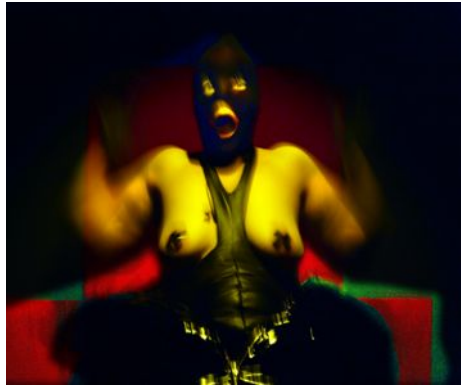


THE DIVINE TRILOGY

Created & Performed by Julia Bardsley
with music created and mixed live by Andrew Poppy

part one: **TRANS-ACTS**

An accident at the crossroads between video and live presence. A smash up at the intersection of performance and the script. A Director and Actress splayed across the dissecting table, waiting for the Understudy to walk on and corpse. A last supper for an audience of twelve intimates



part two: **ALMOST THE SAME**

(feral rehearsals for violent acts of culture)

A figure lurks in a dark place of collapse, a theatre of dirt, an ark of humiliation. Beneath the pelt it growls, licks, pants, bites back...



part three: **AFTERMATHS:**

a tear in the meat of vision

From the dazzling heights of the apocalyptic catwalk, from amongst the glorious atrocity merchandise, from the sumptuousness of the furniture of dis-ease, from within the abandoned mourning mass - the spectacular fe/male host/ess emerges, preaching The Doctrine of Last Things.



Andrew Poppy's *Sustaining Ensemble:* *'...and the Shuffle of Things'*

Mixing dark ambient grooves, classical piano, an infectious pulse and some oscillators with enigmatic stories of lost submarines and the head of Orpheus as a football. A CD and performance. Solo and ensemble versions with Sustaining Ensemble.

Concept, music, text and performance by Andrew Poppy

Videos by Julia Bardsley



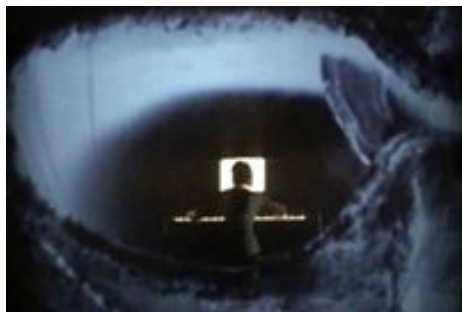
IMPROVEMENTS ON NATURE a double act

The scientific enquiry of Charles Darwin incubated by the traumatised imagination of Mary Shelly. Two performers are sandwiched between two projection screens: two samples. The inside and outside of their world exhibited to the audience as a series of visual and sonic images.

Created & performed by Andrew Poppy & Julia Bardsley

Music, texts and electronics by Andrew Poppy

Video images, objects and settings by Julia Bardsley



AVALANCHE THOUGHTS

are moments that teeter on the edge of disaster. Wilful and erotic thoughts that tease and tempt us into the abyss. Chaotic, statistical and overwhelming textures obliterate objects of security, moments of clarity and identity. They may be situations of fate or beds of our own making. A hybrid and heterogeneous work which sews together the experience of the gallery, the theatre and the concert hall; balancing video projection, live and recorded music, photographic and sculptural books, text as object and sound.

Concept by Andrew Poppy and Julia Bardsley

Live piano Tania Chen Voices; Anastasia Hille and Boyde Clack

Music, texts and electronics by Andrew Poppy

Video images, objects and settings by Julia Bardsley

works in development



The Family and the Furniture

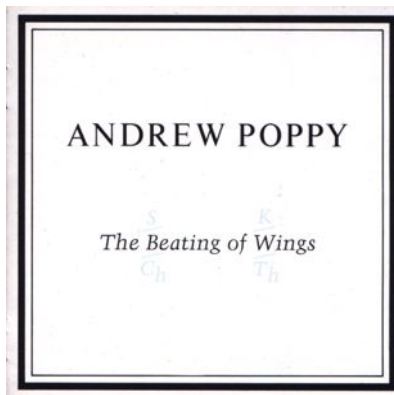
For large group of performers

The *Sustaining* Ensemble:

Jelly

Shiny Floor Shiny Ceiling

New musical works and performance



The Beating of Wings

A live and staged version of the 1984 album on ZTT records

The House of Wonder and Panic

A performance installation

Hoarding Flap

A notice board of evacuation strategies for the coming storm

M O R E

INFO & IMAGES

www.juliabardsley.net or www.myspace.com/juliabardsley

INFO AND SOUND

www.myspace.com/andrewpoppy

SCORES. PROGRAMME NOTES, PRESS

[http://www.scribd.com/field radio](http://www.scribd.com/field_radio)

VIDEOS

www.vimeo.com/popbardprojects

ARTIST IN RESIDENCE PAGE

[http://www.chelseatheatre.org.uk/artists in residence](http://www.chelseatheatre.org.uk/artists_in_residence)

works commissioned by

Sacred at Chelsea Theatre London
Spill Festival of performance London
New Moves International Glasgow
Gale Gates New York Yew York
Trouble Festival Brussels Belgium
KarnArt Lisbon Portugal

Funded by

Arts Council of England
NESTA
private donation

©this document, text and photography
2010 Bardsley_Poppy Projects